

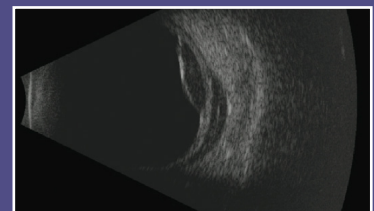


# 13<sup>th</sup> European Eye Cubed™ Ultrasound Training Course

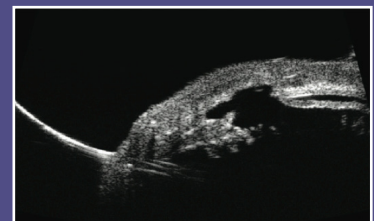
SATURDAY, 28 NOVEMBER 2015 | PRAGUE, CZECH REPUBLIC

You are invited to join the leading ultrasound experts at the 13th European Eye Cubed™ Ultrasound Training Course in Prague to learn about the fundamentals of high-resolution ophthalmic echography in a series of clinical lectures and hands-on workshops.

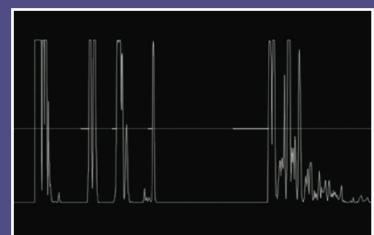
<b>DATE:</b> Saturday, 28th November 2015	<b>SPEAKERS:</b> <b>Hatem ATTA, MD</b> NHS Grampian University of Aberdeen Aberdeen, United-Kingdom
<b>TIME:</b> 10.00am - 4.00pm	<b>Earl Randy CRAVEN, MD</b> King Khaled Eye Specialist Hospital Riyadh, Saudi Arabia
<b>LOCATION:</b> HILTON Prague Hotel Pobřežní 1, 186 00 Praha 8 Czech Republic	<b>Jens Folke KILGAARD, PhD</b> Rigshospitalet, Copenhagen, Denmark
<b>COURSE FEES:</b> Early Bird Rate: 45.00 euro (November, 24 deadline)  Full Rate: 60.00 euro	<b>RSVP:</b> Thursday, 26 November 2015



10 MHz Posterior Segment



40 MHz UBM



Axial Length Biometry

**RSVP: FCHECINSKI@ELLEX.COM BY 26 NOVEMBER 2015**



# 13<sup>th</sup> European Eye Cubed™ Ultrasound Course

SATURDAY, 28 NOVEMBER 2015 | PRAGUE, CZECH REPUBLIC

## COURSE AGENDA

### Introduction to Ultrasound

The Role of Ultrasound in Ophthalmology

### Clinical Session: Cataract and Refractive Surgery

How to Perform Accurate IOL Calculations in Various Clinical Situations.

### Clinical Session: Vitreoretinal Pathologies

Evaluation of Vitreoretinal Disorders and Chorio-retinal Lesions & Masses with Ultrasound

### Hand-On Session: Eye Cubed Workshop One

- Performing Immersion Biometry
- Posterior B-Scan Examination
- Techniques for UBM Examination

### Clinical Session: Oncology

Ultrasonography of Ocular Tumors: Techniques and Diagnosis with Posterior B & UBM

### Hand-On Session: Eye Cubed Workshop Two

- Performing Immersion Biometry
- Posterior B-Scan Examination
- Techniques for UBM Examination

### Clinical Session: Glaucoma

The use of UBM in Glaucoma Management

### Hand-On Session: Eye Cubed Workshop Three

- Performing Immersion Biometry
- Posterior B-Scan Examination
- Techniques for UBM Examination

## VENUE & ACCOMMODATION

### HILTON Prague Hotel

Pobřežní 1,  
186 00 Praha 8  
Czech Republic

Note: The Hotel Hilton Prague is situated near city centre and 30 minutes to Prague airport by taxi (16 Kms)

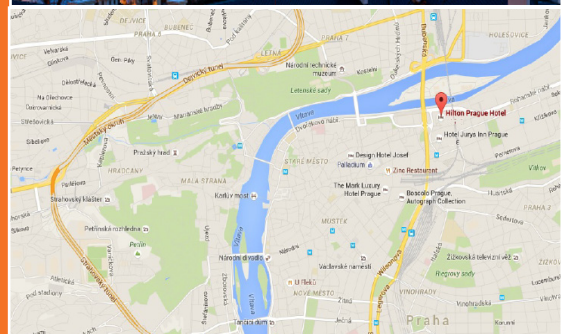
### SPECIAL ROOM RATES:

Single Guest Room: from 3100 CZK\* (115 EUR)

Double Guest Room: from 3500 CZK\* (130 EUR)

### To book your accommodation contact:

[fchecinski@ellex.com](mailto:fchecinski@ellex.com)



**RSVP: FCHECINSKI@ELLEX.COM BY 26 NOVEMBER 2015**