

# Gain Confidence & Save Time

The Benefits of OCT-Based Cornea Power & Epithelial Thickness Mapping\*

**ASCRS in San Francisco**

**Saturday, April 20, 2013**

**Moscone Center, San Francisco**

8:00 – 8:30am Registration & Breakfast

8:30 – 9:30am Program

**REGISTER NOW!**

## SPEAKERS

### **R. Doyle Stulting, MD, PhD**

*The use of RTVue for IOL power calculations  
in eyes with previous corneal refractive surgery.*

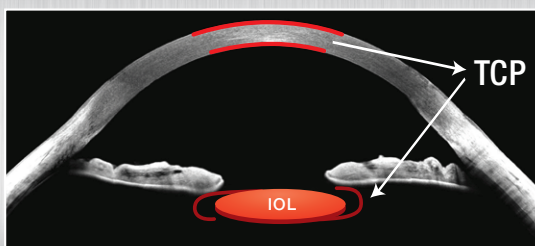
### **Lawrence Chao, MD**

*The benefits of OCT Cornea Power for post  
laser vision correction IOL calculations.*

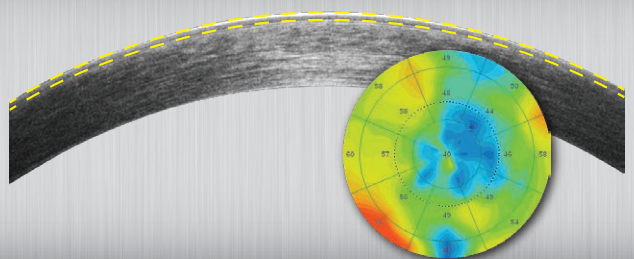
### **Yaron S. Rabinowitz, MD**

*How to effectively use OCT to compliment  
videokeratography in refractive surgery.  
- Using the new Epithelial Thickness Mapping\**

TCP: Total Cornea Power



ETM: Epithelial Thickness Mapping\*



Visit us at ASCRS **Booth 1014**

**optovue**  
DEFINING THE OCT REVOLUTION